

## Installation Instructions

### Chapter 1 – Getting Started

#### 1.1 Subject

Car2PC adapter for Car PC / laptop integration into car stereo and AUX Interface for MP3 player

#### 1.2 Introduction

Thank you for purchasing Car2PC Car PC Digital Interface. The Car2PC Interface is designed to provide seamless integration between Car PC / Laptop and car stereo. It will allow you to listen to the sound from the PC through the car stereo speakers, control your audio files, browse and select them with car stereo buttons.

Car2PC adapter will allow you to connect your Car PC / laptop to the car stereo that is CD changer capable.

#### 1.3 Precautions

##### Proper mounting location

Securely install the interface in a location free from; heat, humidity, moving parts or direct sunlight. Beware of hot-air flow from your vehicle's climate control system. We recommend securing the interface to a suitable location, free of sharp metal edges, using double sided tape, Velcro or wire ties.

#### 1.4 Disclaimer

Modifying the radio may void any outstanding warranty it may have.

- This product is not affiliated with any of the OEM manufactures
- There are no warranties expressed or implied by purchase of this product
- While every care has been taken to provide a quality product, we cannot guarantee the Car2PC adapter to function correctly if installation is not done according to the instructions in this guide
- We're not liable for misuse of this product. Misuse includes improper installation, damage to the board or radio while trying to install, and illegal use of the modified radio

#### 1.5 Package content



Car2PC interface (1)



USB + 3.5 mm audio cable (2)

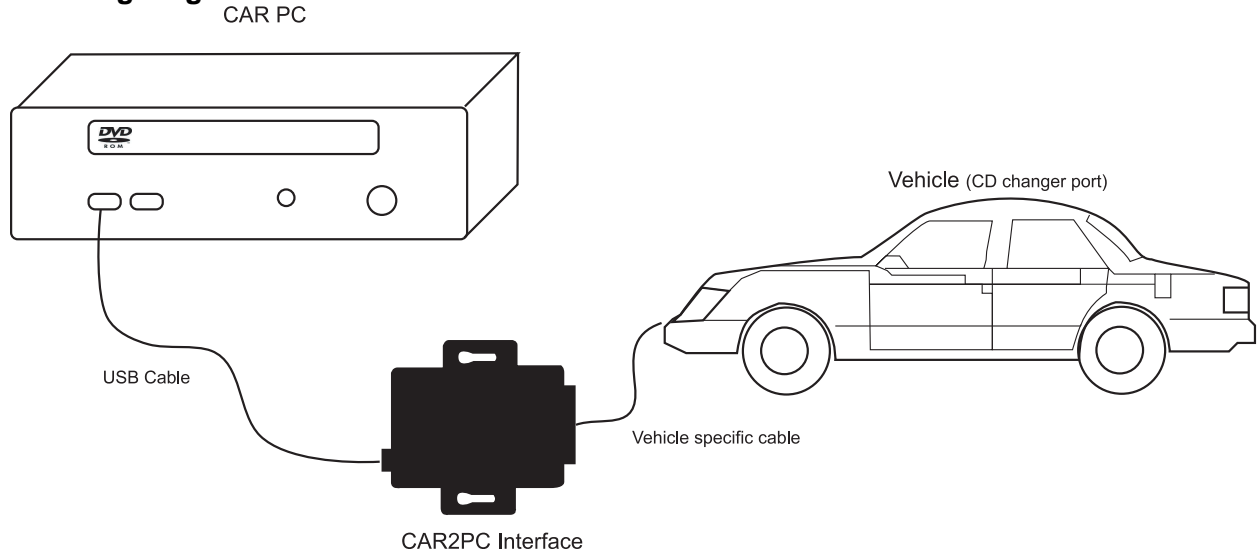


Vehicle specific cable (3)



Drivers / Plugins Disk (4)

## Basic wiring diagram



### 1.6 Important Compatibility Notes

If your vehicle is equipped with an external factory CD changer, you must disconnect it in order to be able to install the interface. You will lose the use of the external CD changer to gain the use of your Car PC or MP3. Build-in CD changer will remain working.

For a full version of the Car2PC application guide please visit

[http://gromaudio.com/grom\\_application\\_guide.pdf](http://gromaudio.com/grom_application_guide.pdf) or contact Car2PC at [support@car2pc.com](mailto:support@car2pc.com)

## Chapter 2 – General Installation

### 2.1 Installation location

Most installations will require you to remove the factory radio in order to plug in the vehicle specific harness.

For some vehicles you will also have an option to connect the interface to the factory pre-run CD changer cable located in the trunk.

### 2.2 Tools needed

In many cases there are no any special tools required in order to remove the stereo out. For some stereos it is better to use car stereo removal tools. Please consult your local car audio shop or your vehicle's dealership for instructions or assistance if necessary.

### 2.3 Preparation and adapter installation

1. Turn off car engine and remove key from ignition
2. If your radio uses a **Security Code**, make sure that you have the code before unplugging the radio.
3. Un-mount your radio from the dash in order to get access to the back side of the radio. Some vehicles require the special tools to remove the radio. Please consult your vehicle's dealership or a local car audio professional if necessary.

4. Attach the car harness connector to the back of the stereo to the CD changer port. Be sure to make a firm connection but do not force it. Connect the other end to the interface.
5. **If there is a black single cable on the vehicle specific harness (3)** you will need to attach it to the back bolt of the car stereo.  
**Note:** Without attaching the black cable to the chassis of the stereo GROM adapter will not work!
6. **For AUDI vehicles only:** For some AUDI headunits the additional part required in order to gain the access to the CD changer port. Please refer to the instructions on that webpage:  
<http://gromaudio.com/pie-audi-how-to.html>
7. **For BMW vehicles only:** Please refer to the installation insert for the special guidelines for BMW dashboard installation.
8. **For Pioneer interface only:** Attach yellow wire to the ground (car's frame) and red one to the battery +12V
9. Now that the interface is connected to the radio, you will need to test the operation of the interface before re-assembling the dash.
10. Turn you car stereo on and switch it over to CD Changer mode. It should show Disk 1, Track 01 on a display.
11. **Note: On most Lexus and Toyota cars you have to turn ignition off and then on for device to work.**
12. Find a place where you can place Car2PC. In many cars there is enough room in the dash to place Car2PC.  
**Note:** Make sure you mount Car2PC in a place with enough room so when you mount the car stereo back you do not break the adapter.
13. You may use glove box or other spaces in a dash to direct the USB and Audio cables out.
14. Mount your car stereo back into the dash, make sure it's clips are securely fastened

#### **Adapter mounting in the trunk (for VW and BMW only)**

1. Locate trunk mounting cable in your car
2. Usually it is located at the left side of the car in the back
3. Disconnect existing CD changer if any
4. Attach audio cable and trunk cable

**Congratulations!** You have installed Car2PC adapter and you may use it right away with your PC / laptop or MP3 player.

## Chapter 3- Software Installation

### 3.1 Introduction

Car2PC adapter allow PC to be controlled by the car stereo via USB connection. It is not required that you install the drivers and software in case if you want to hear music from your computer on your car stereo. In this case CAR2PC can be used as a regular Auxiliary adapter.

In order to utilize most of the CAR2PC features you will need to install the following: drivers, software (winAmp,Wmp etc), plugins.

### 3.2 Driver installation

15. Make sure CAR2PC adapter is connected to the car stereo and it is in working order (see installation instructions)
16. Connect Y cable to your PC/laptop. Use USB and audio jack for that
17. Attach another side of the cable to the CAR2PC
18. Once connected, the PC running Windows 2000 or XP will prompt

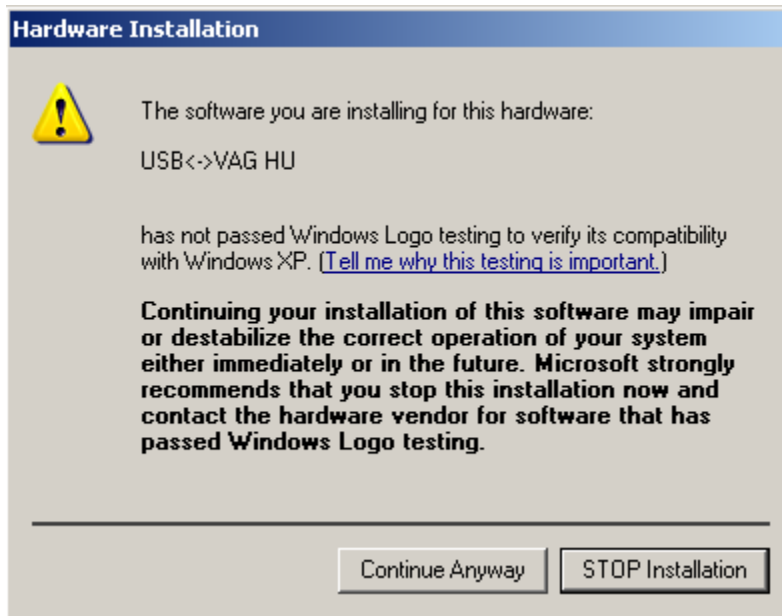


And then the dialog below will appear:



19. Insert driver's disk into CD drive and click Next

20. When Windows comes up with the message below, just click "Continue Anyway" button



21. Shortly after installing the driver, Windows will prompt for another device found

22. Repeat the same steps above to install the CAR2PC serial device

23. If no errors were prompted by Windows, your installation is complete and you may need to install plugins for the Windows Media Player or WinAmp.

### 3.3 Software installation

#### WinAmp

24. Locate the directory D:\winamp2\ and run the winamp295.exe file. Follow the instructions on a screen

25. Once installed make sure to run the plug-in installation located in D:\hump3\_plugin directory

#### Windows Media Player

Usually Windows Media Player already preinstalled in a system. If not, visit the following link and install the WindowsMedia Player according to instructions on a web page:

<http://www.microsoft.com/windows/windowsmedia/default.aspx>

Once you have Windows Media Player installed, you may run the following file:

D:\wmp\_plugin\wmp\_hump\_1\_5\_1.exe and install the plugin for Car2PC adapter.

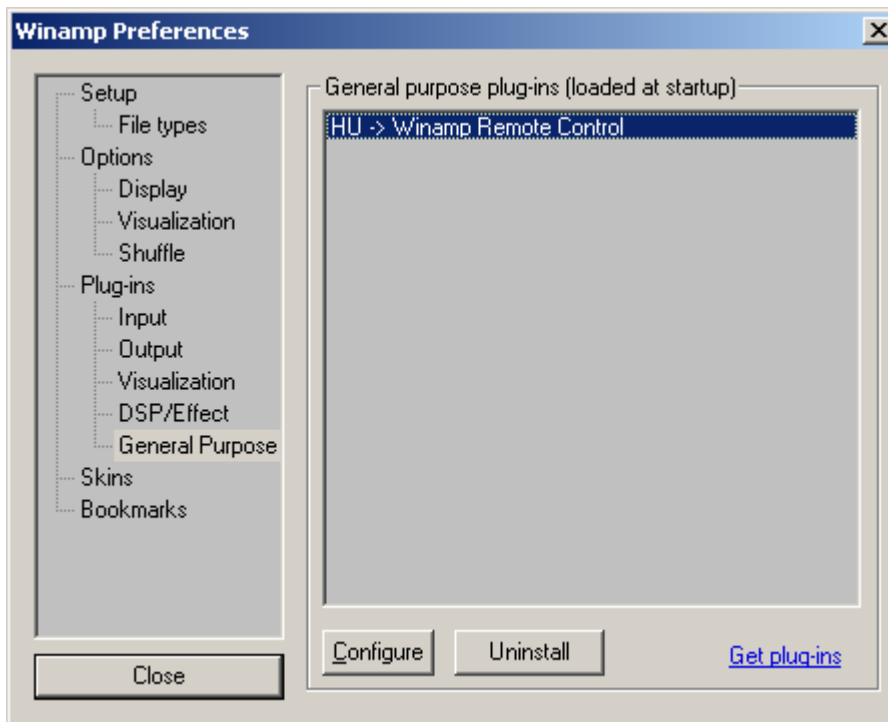
### 3.4 Configuring Car2PC under WinAmp

WinAmp plug-in included on a disk supports simple concept of playlists. Whenever you select buttons 1 through 6 on your headunit the plugin will load the appropriate playlist and start playing it from the position it remembers.

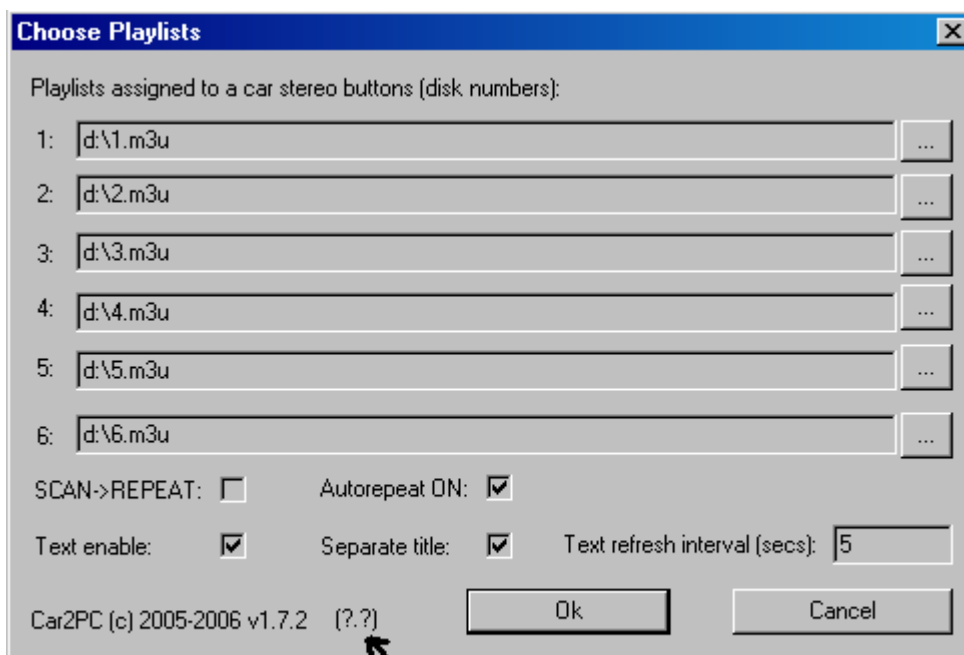
In order to configure which playlist will be playing upon button press, do the following:

1. Open WinAmp

2. Click Options->Preferences->Plug-ins->General Purpose->"HU -> WinAmp Remote Control" as shown below:



3. Click on Configure button
4. On the dialog below you will be able to choose the playlist for each button from 1 to 6



**Firmware version**

5. There are some other options which you can use in plugin
  - a. **SCAN->REPEAT** - many stereos do not have Repeat button. Usually they have SCAN button instead. This option allow you to turn Repeat option on in WinAmp by using the SCAN button on a car stereo

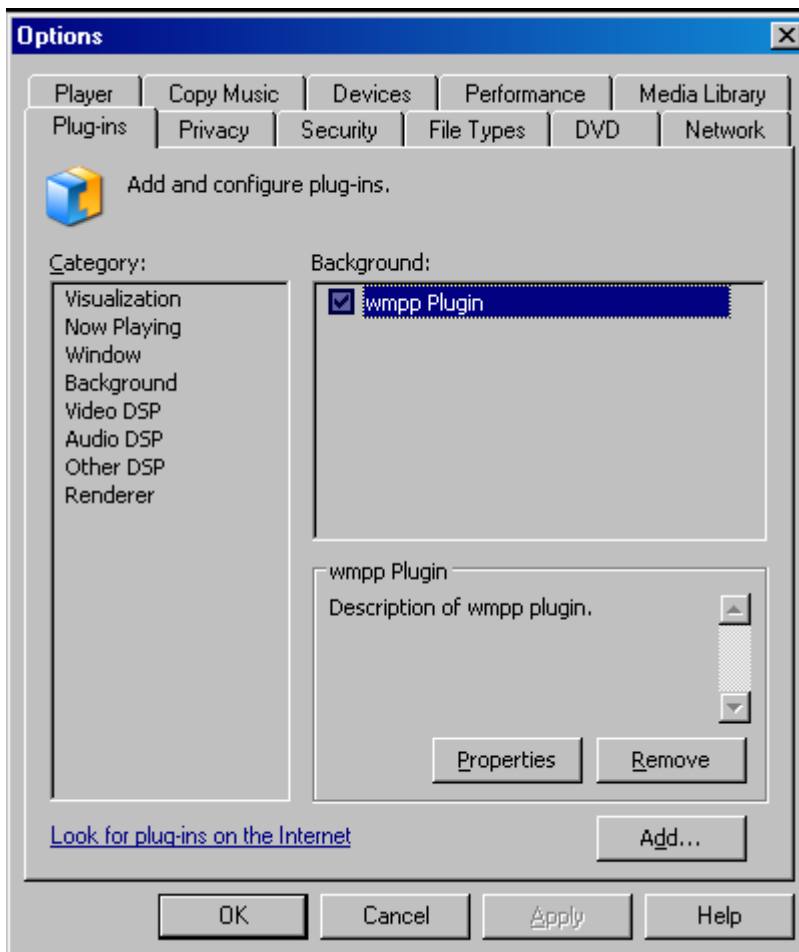
- b. **Autorepeat ON** – turn the Repeat option in WinAmp regardless of the state of the Repeat button on car stereo
- c. **Text Enable** – Some car stereos may display text. In case if you own such a car (consult with your dealer to see if your car supports that) you may enjoy seeing artist, album track and some other info on your display. The way text is displayed dependent on a stereo.
- d. **Separate title** – Some car stereos do support separate fields for artist, album and track title. If your stereo supports that (usually Toyota, Honda, Pioneer stereos), you may enjoy seeing the information in such format on your stereo
- e. **Text Refresh Interval** – usually it is not needed, but on some cars (such as BMW) it will help to leave text on screen after pressing navigation or mode buttons.

### 3.5 Configuring Car2PC under WMP

The WMP plug-in on CD disk supports very simple concept of playlists. Whenever you select buttons 1 through 6 on your head unit the plug-in will load the appropriate playlist and start playing it from the position it remembers in the configuration file.

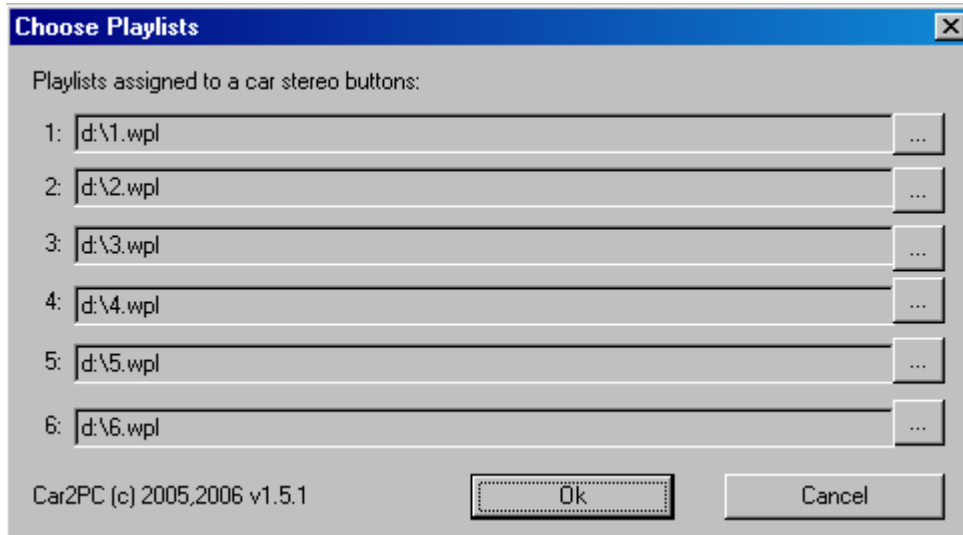
In order to configure which playlist will be playing upon button press, do the following:

1. Open Windows Media Player
2. Click Tools->Plugins->Background->wmpp plugin” as shown below:



3. Click on Properties button

4. On the dialog below you will be able to choose the playlist for each button from 1 to 6



### 3.6 Troubleshooting

Symptom	Cause	Remedy
Radio is not recognizing Car2PC interface	Bad cables or cables are not connected properly between the interface box and car radio.	Check connection and cables, push in firmly.
<b>For VAG only:</b> Radio is not recognizing Car2PC interface	Single black wire on the vehicle specific harness (3) is not attached to the stereo chassis ( stereo body)	Read paragraph 2.3 p. 5 of this guide. Attach the black cable to the car stereo body.
<b>For Pioneer Interfaces only:</b> Low sound volume		Refer to the post here: <a href="http://www.indashpc.org/vbulletin/viewtopic.php?p=2388">http://www.indashpc.org/vbulletin/viewtopic.php?p=2388</a>
<b>For BMW only:</b> Radio is not recognizing Car2PC interface	<b>iBus wire may get loose</b> Sometimes using T-Tap clips, the IBus wire may not receive proper connection due to its wire size.	Make sure the IBus wire is securely attached by using multimeter or slightly tight up the T-Tap connector so its slot get smaller.

### **3.7 Support**

*For all technical questions please e-mail to [info@car2pc.com](mailto:info@car2pc.com). For technical support please visit <http://car2pc.com/support.html> and fill in the web form or visit the car2pc support forum at <http://indashpc.org/vbulletin/>.*

*Your question will be answered within 24 hours.*

### **3.8 Manufacturer Warranty**

#### **One year limited warranty**

This warranty covers any supplied or manufactured parts of the product that, upon inspection by Car2PC authorized personnel, is found to have failed in normal use due to defects in the material or workmanship. This warranty does not apply to the installation expenses.

Attempting to service or modify this unit, operating this unit under conditions other than the recommended will render this warranty void.

Unless otherwise prescribed by law, Car2PC and its affiliates shall not be liable for any personal injury, property damage and or any incidental or consequential damages of any kind (including water damage) resulting from malfunctions, defects, misuse, improper installation or alteration of this product.

All parts of this product are guaranteed for a period of 1 year as follows:

Within the first 12 months from the date of purchase, subject to the conditions above, Car2PC will repair or replace the product at their discretion, if it is defective in the material or workmanship.

All customers should contact GROM Audio support team at <http://gromaudio.com/support.html> and obtain an **RMA** number. All defective adapters returned to Car2PC within warranty period must be accompanied by the **original invoice (or copy)**.

All shipping handling charges are non-refundable. Warranty does not cover normal tear and wear, damages due to negligence, improper installation and operation.

For product information, questions or customer service please email: [info@car2pc.com](mailto:info@car2pc.com)